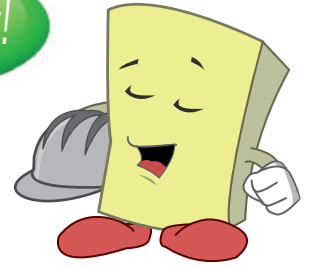


# Insufoam<sup>®</sup> 6000

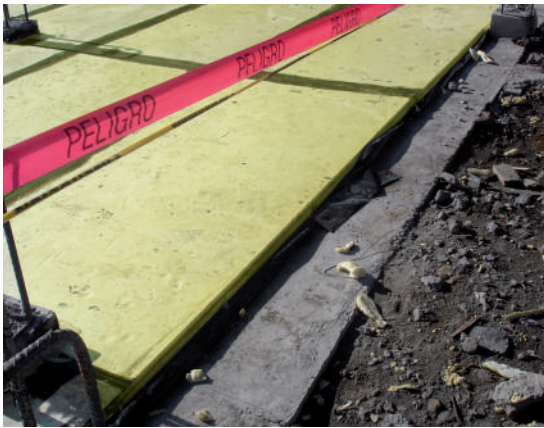
High Resistance Extruded Polystyrene Thermal Insulation

¡Your thermal ally!



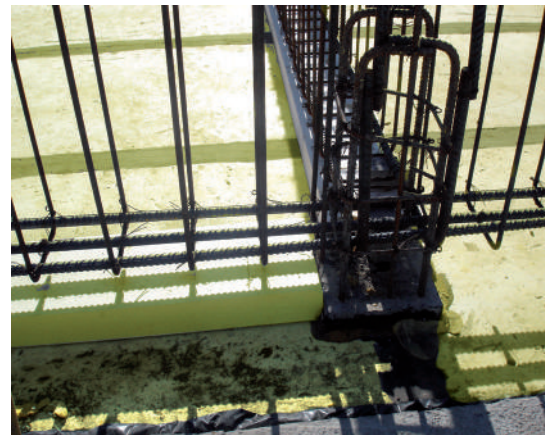
## THE BEST SOLUTION TO THERMALLY INSULATE FLOORS

Insufoam 6000<sup>®</sup> are extruded polystyrene foam panels used for civil engineering and other commercial applications. Available in a wide range of presentations to meet the needs of the construction industry, where suitable insulation for heavy duty applications is required.



### BENEFITS

1. Available in different thicknesses and lengths
2. Hydrophobic
3. High thermal resistance
4. Immediate availability in standard measures
5. No maintenance needed
6. Long term thermal stability
7. Saves energy
8. Acts as a double vapor barrier
9. Compressive strength of 60 lbs / in<sup>2</sup>
10. Excellent dimensional stability
11. Not a nutritious substrate for insects and rodents



### APPLICATIONS

- Thermal Insulation for foundations
- Thermal insulation for temperature controlled distribution centers
- Thermal insulation for air strip runways



[www.insufoam.com.mx](http://www.insufoam.com.mx)

POLYGLOBAL

Carretera México Toluca # 5324, Col. El Yaqui

Delegación Cuajimalpa, México D.F. 05320

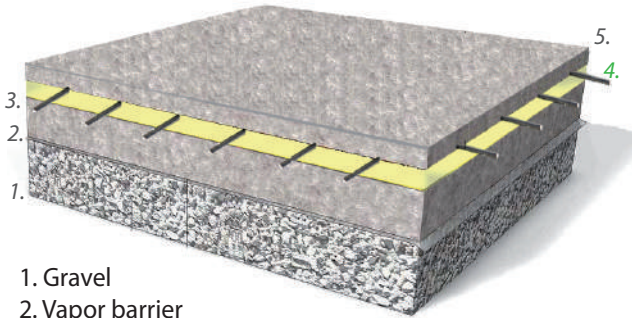
US Phone: (281) 576 1611 info@polyglobal.com.mx

Mex Tel: 52 (55) 5255 6000 Mex Fax: 52 (55) 5250 8527

[www.polyglobal.com.mx](http://www.polyglobal.com.mx)

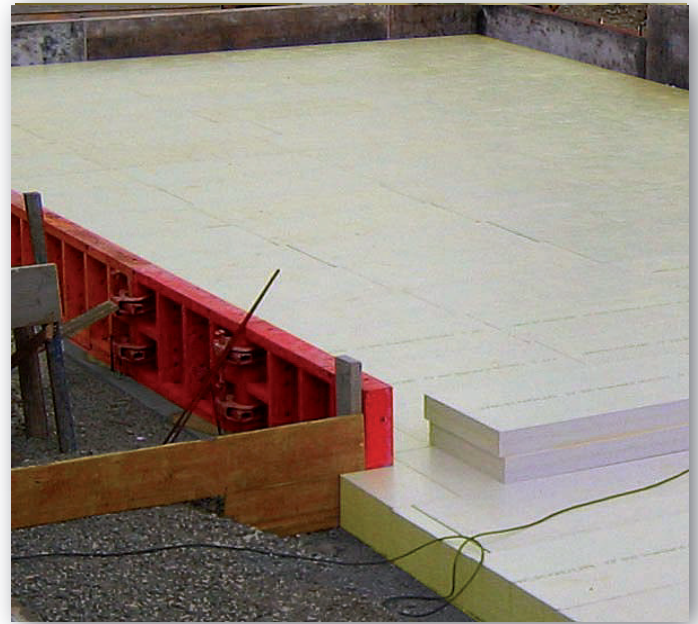
# What is Insufoam<sup>6000</sup> ?

It's the best heat insulation for floors; thanks to its closed cell structure it offers a high resistance to humidity, static and dynamic workloads and high compressive strength.



1. Gravel
2. Vapor barrier
3. Concrete
4. Thermal insulation
4. Metal reinforcement
5. Slab

**Insufoam<sup>6000</sup>**



## Advantages

The correct use of Insufoam 6000<sup>®</sup> panels for the thermal insulation of floors allows insulation avoiding the heat loss and ensures the correct distribution of thermal energy in the building.

## Easy to install

Its straight edge borders make it easy to install in floor insulation systems.



Thickness	R	Width & Length	Finish
1"	5	4ft x 8ft	straight

**Note:** Special lengths can be fabricated upon request to minimize waste material. Speak to one of our sales representative.

## Mechanical Resistance

Insufoam 6000<sup>®</sup> has a resistance to compression of 60 pounds. Its extraordinary mechanical strength makes it the ideal product to be specified and installed on all floors insulation systems where to support all work loads.

## Installation

Insufoam 6000<sup>®</sup> should be installed on a clean, flat and adequate surface. A high density polyethylene or aluminum foil vapor barrier is recommended. An electric welded metallic mesh can be placed next and you are ready to place the final concrete foundation.

## Distributed by:

**Distribution and Technical Information:**  
 Carretera México Toluca # 5324, Col. El Yaqui  
 Delegación Cuajimalpa, México D.F. 05320  
 Tel: 52 (55) 5255 6000 ext. 405 al 407  
 Fax: (55) 5250 8527,  
 USA: (281) 576 1611  
 Contact: [info@polyglobal.com.mx](mailto:info@polyglobal.com.mx)

[www.polyglobal.com.mx](http://www.polyglobal.com.mx)

