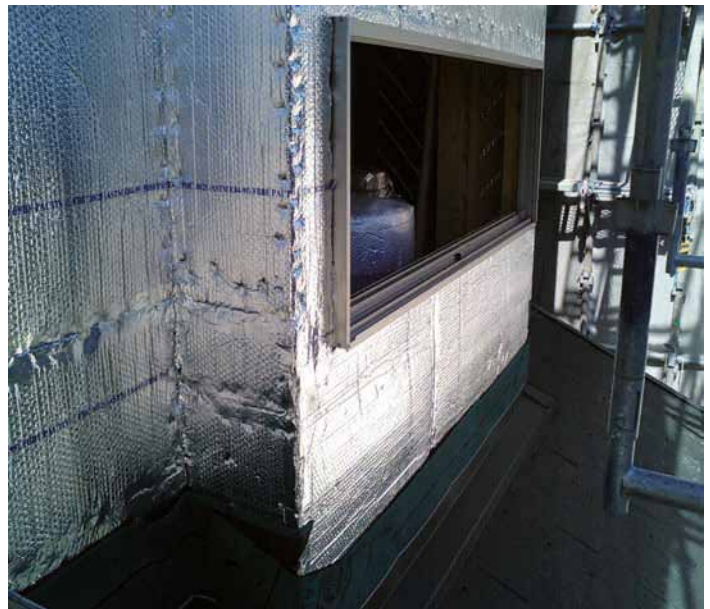


Crystal^{therm}®

Aislamiento Térmico de Burbuja laminado con acabado metálico

LA ÓPTIMA SOLUCIÓN TÉRMICA EN AISLANTES REFLECTIVOS

This product consists of a layer bubble in 3/16-inch polyethylene foam that is laminated to a face and or is inserted between two metal plates that provide an excellent thermal resistance. Designed to be installed on metal constructions, walls, ceilings, garage doors and in confined movement spaces.



BENEFITS

- Reflective high thermal value.
- Qualified as vapor barrier.
- Easily installed.
- It adapts to all imaginable forms.
- Product totally anti-allergic, antitoxic and anticarcinogenic.
- 100% waterproof.
- Prevents bacteria, mold and mildew development.
- Akin to a wide range of fixing systems.

APPLICATIONS

- Interior and exterior walls.
- Attics.
- Behind hot-water radiators.
- Ceilings inside ductwork.
- Garage doors.
- Metal buildings, hog and poultry farms.



INSTALLATION ADJUSTMENTS

Crystaltherm® Must always be installed in the interior of a structure.

Crystaltherm® Must be at least 3 feet away from heating appliances, chimneys, fans, etc.

NEVER install directly over lighting or other source device to heat.

Always disconnect any source of electricity when installing Crystaltherm

TECHNICAL DATA

Características - Characteristics	Valor - Value
Espesor - Nominal thickness	3/16 in.(4mm)
Resistencia de Tracción - Tensile strength	14.6 lb
Resistencia al Desgarre - Tear strength	4.9 lb
Ancho de rollo - Width (in.) of roll	1.20 mts - 48"
Largo - Length (ft.)	120 mts - 394'
Peso - Weight (lbs)	24
CONDICIONES DE APLICACIÓN - APPLICATION CONDITIONS	
Temperatura - Temperature:	-60°F minimum, 180°maximum
CARACTERÍSTICAS DE DESEMPEÑO - PERFORMANCE CHARACTERISTICS	
Desempeño Térmico - Thermal performance:	
Emisión - Emissivity:	0.03
Reflectividad - Reflectivity:	97%
Valores R - R Values	
Flujo Calorífico hacia abajo - Heat flow down:	14.1 (includes downward heat resistance)
Flujo Calorífico hacia arriba - Heat flow up:	4.9
Flujo Calorífico horizontal - Heat flow horizontal:	6.2
Desempeño de Barrera de Vapor - Water Vapor Permeance	
Método - Method:	ASTM E96/ ONCG 51.33
Resultado - Result:	0

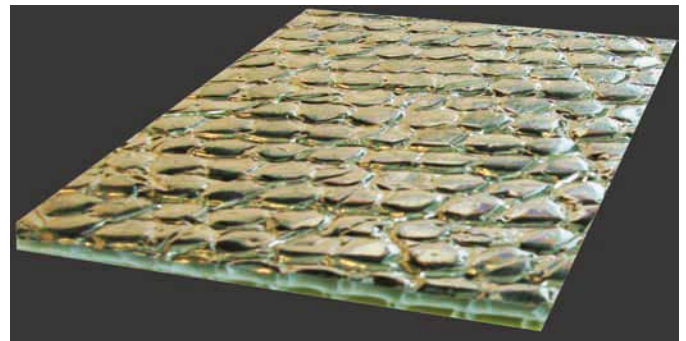
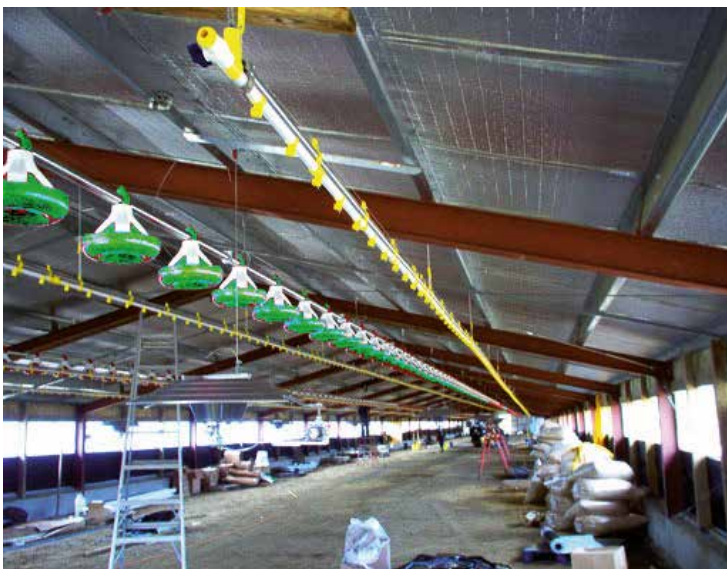
Our metal sheets reflect solar radiation thanks to its high capacity index reflection, while the bubble array of air prevents transmission of heat by conducting and convectioning.

Crystaltherm® an economical solution for a wide range of industrial usages. Examples:

- Industrial slopes
- Commercial buildings
- Home insulation
- Below wood or laminate flooring
- Roof insulation
- Carpet hessian
- Construction.

Standard roll size: 47" x 393' x 3/16 ".

- High R-value
- Vapor barrier
- Reflective Barrier
- Clean, lightweight and strong
- Energy saving



Distributed by:

Technical Information and Distributed by:
 Carretera México Toluca # 5324, Col. El Yaqui
 Delegación Cuajimalpa, México D.F. 05320
 Tel: 52 (55) 5255 6000 ext. 405 al 407
 Fax: (55) 5250 8527,
 USA: (281) 576 1611
 Contacto: info@polyglobal.com.mx

www.polyglobal.us

