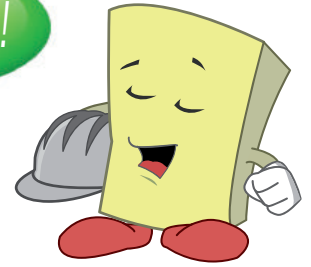


# Insufoam<sup>4000</sup>®

High Resistance Extruded Polystyrene Insulation

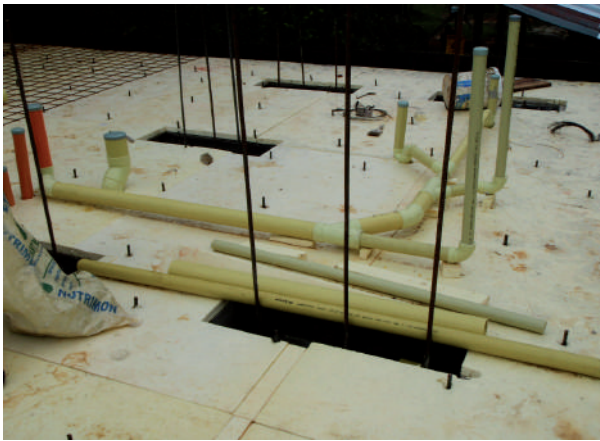
## 4000

¡Your thermal ally!



## THE BEST SOLUTION FOR FLOOR THERMAL INSULATION

Insufoam 4000 is a thermal insulation material with the best performance for thermal insulation of floors. With its resistance to compression, zero absorption of humidity and its load capacity, it offers the best cost-benefit results and the longest lifespan of the system.



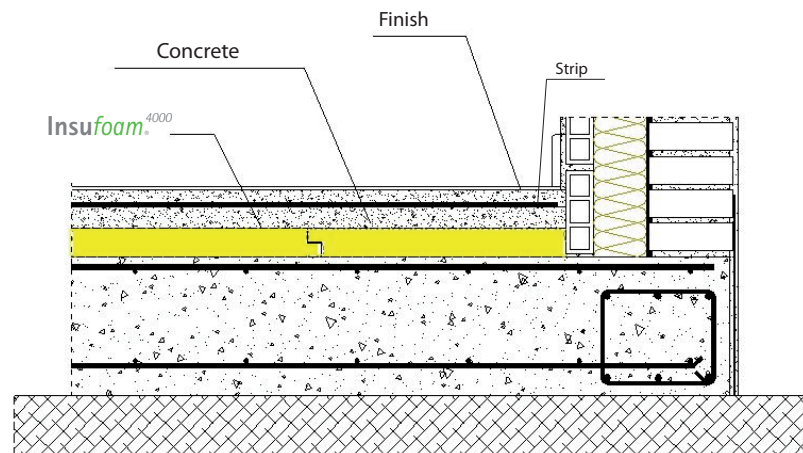
### BENEFITS

1. Availability in different thicknesses and lengths
2. Zero water absorption
3. High value of thermal resistance
4. Immediate availability in standard measurements
5. No maintenance needed
6. Long term thermal stability
7. Saves energy
8. Acts as a double barrier for vapor
9. Resistance to compression: 40 pounds / in<sup>2</sup>
10. Adapts to the best insulation floor system with prefabricated or traditional floors
11. Excellent dimensional stability
12. Prevents energy escape by cooling floors and subsoil

### APPLICATIONS

- Insulation of floors in cold chambers
- Insulation of floors in distribution centers of controlled temperature

Insulation system example



[www.insufoam.com.mx](http://www.insufoam.com.mx)

POLYGLOBAL

Carretera México Toluca # 5324, Col. El Yaqui

Delegación Cuajimalpa, México D.F. 05320

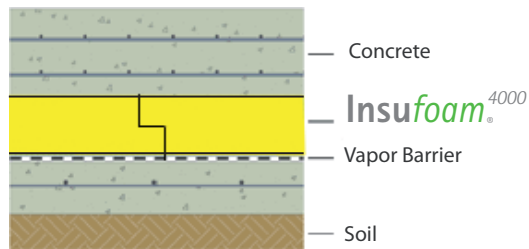
US Phone: (281) 576 1611 info@polyglobal.com.mx

Mex Tel: 52 (55) 5255 6000 Mex Fax: 52 (55) 5250 8527

[www.polyglobal.com.mx](http://www.polyglobal.com.mx)

# What is Insufoam<sup>4000</sup> ?

It is the best thermal insulation material for floors due to its hydrophobic characteristics, resistance to vapor, strong gradient of vapor pressure, static and dynamic loads, as well as its high resistance to compression.



Floor Insulation of cold chamber



## Advantages

Correct use of Insufoam 4000 panel allows insulation, avoids loss of energy and assures correct thermal energy distribution in the building.

## Easy to Install

The availability of lateral cuts in half wood and straight makes installation of floor insulation systems very simple.



Thickness	R	Width & Length	Finish
1"	5	4ft x 8ft	straight
1.5"	7.5	4ft x 8ft	
2"	10	4ft x 8ft	cornice cut 

*Note: Special lengths can be fabricated upon request to minimize waste material. Speak to one of our sales representative.*

## Mechanical Resistance

Insufoam 4000 has a resistance to compression of 40 pounds / 2in and a compression yield that bears a product with 125kPa for 50 years. The product only undergoes 1.5% initial distortion and 2% final distortion. Its extraordinary mechanical resistance makes it an ideal product to serve as a surface or being installed in all floor insulation systems where all loads rest upon the insulator.

## Installation:

It is recommended to install Insufoam 4000 above a firm and plane surface. The half wood lateral cut facilitates the juxtaposition of the panels. It is favorable to lay a vapor barrier that can either be high density polyethylene, or aluminum foil; the cable or mesh is laid outside and then the concrete.

## Distributed by:

**Distribution and Technical Information:**  
 Carretera México Toluca # 5324, Col. El Yaqui  
 Delegación Cuajimalpa, México D.F. 05320  
 Tel: 52 (55) 5255 6000 ext. 405 al 407  
 Fax: (55) 5250 8527,  
 USA: (281) 576 1611  
 Contact: [info@polyglobal.com.mx](mailto:info@polyglobal.com.mx)

[www.polyglobal.com.mx](http://www.polyglobal.com.mx)

